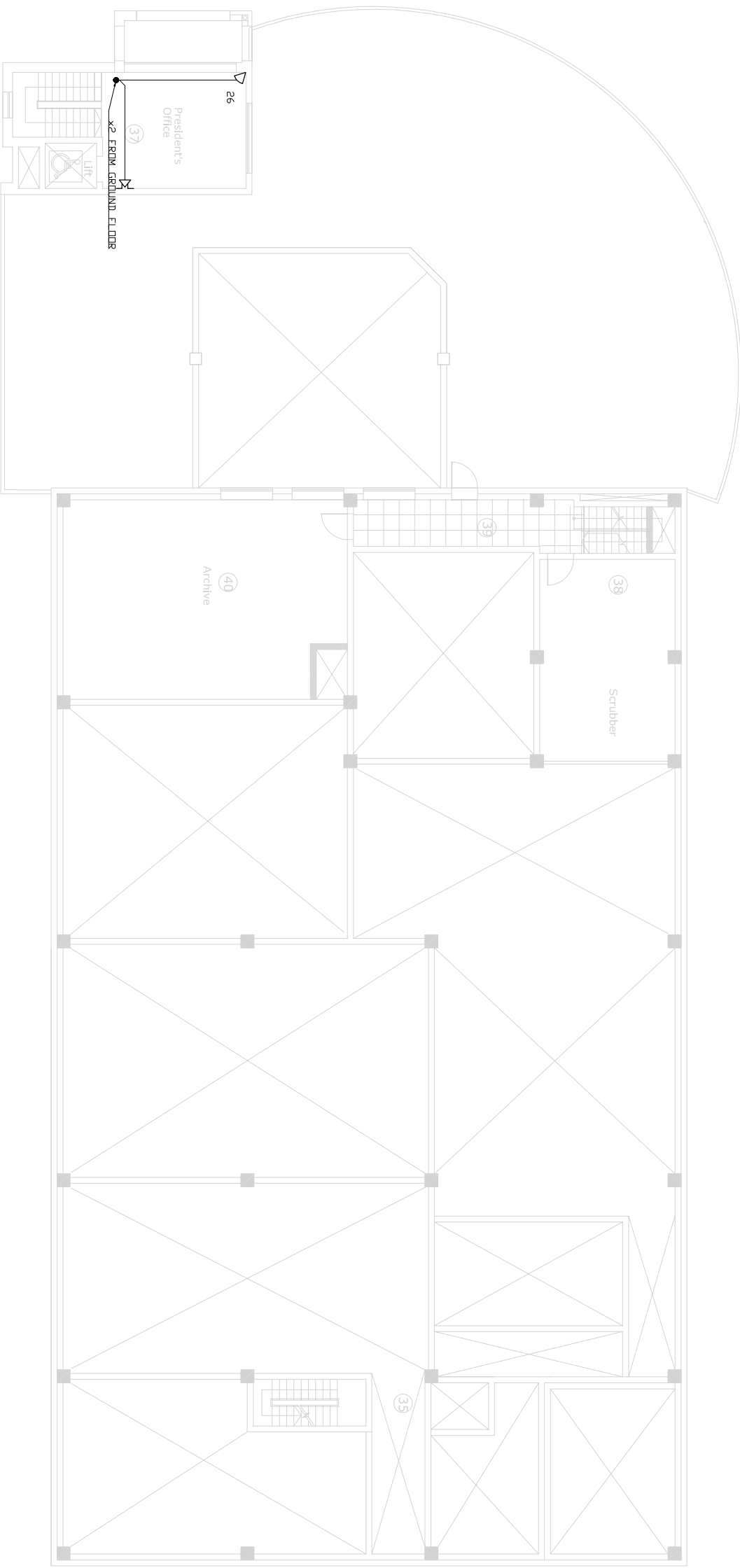
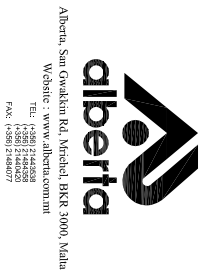


- LEGEND
- MV & PIR MOTION DETECTOR - GAROTEC - RK4150T
 - SOUNDGARD 2 INTERNAL SOUNDER - GAROTEC - 2I-392
 - X339 EXTERNAL SOUNDER-BEACON - GAROTEC - EVO19R
 - G-1TAG LCD REMOTE KEYPAD - GAROTEC - 01-152
 - 595 INTRUDER ALARM PANEL - GAROTEC - 0112SPG3 C/V
 - 020B3 ZONE EXPANDER AND BATTERY BACKUP
 - AUTODIALLER - BENTEL - BTEL2
 - 230V SUPPLY THROUGH DOUBLE-POLE FUSED OUTLET (PROVIDED BY OTHERS)
 - 6 CORE CABLE - IMC - ATS 24x14x022



- NOTES
- CONTROL EQUIPMENT TO BE PLACED IN SAFE AREA AND BE AS MUCH AS POSSIBLE UNREACHABLE FROM UNAUTHORIZED PERSONNEL.
 - ALL CABLES TO BE RATED TO FOLLOW UNDERPASS RULES TO AVOID ANY TAPERING.
 - CABLES WITHIN REACH OR WITHIN UNSAFE AREAS SHALL BE SEGREGATED FROM LOW VOLTAGE WIRING.
 - CONTROL WIRING TO BE SEGREGATED FROM LOW VOLTAGE WIRING.
 - MOTION DETECTORS TO BE MOUNTED AT BETWEEN 2M & 2.7M HEIGHT.

Rev no	Date	Modification	Drawn	Checked
A	16/03/13	AS FITTED	DA	JB



JOB TITLE:	STERLING SNIFF - HAL FAR
JOB NO.:	15236
DRAWING TITLE:	AS FITTED INTRUDER ALARM SYSTEM PLAN VIEW FIRST FLOOR
DETAILED DESIGN DRAWING ISSUED BY:	CAULLIERI & DISCHER
DESIGNED BY:	ROBERT PARRUGIA
DRAWN BY:	ADREAS ONI
CHECKED BY:	MATTHEW CASSAR
SCALE:	1:100 (A1)
DATE:	04 OCT 12
DRAWING NO.:	SD4/12/A-011
REV.:	A

